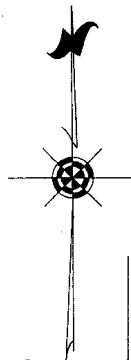


ASSESSOR'S PLAT OF  
**CITY OF STANDISH NO. 5**

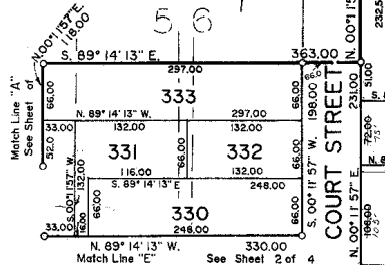
A SUBDIVISION OF PART OF THE S.W. 1/4 OF SECTION 2 AND PART OF THE S.E. 1/4 OF SECTION 3, T. 18 N. R. 4 E.,  
 LINCOLN TOWNSHIP, ARENAC COUNTY,  
 MICHIGAN

SHEET 4 OF 4 **16**

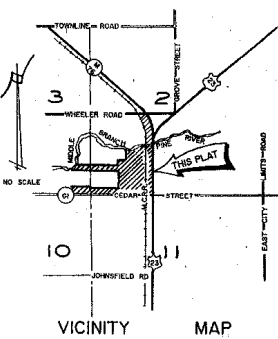
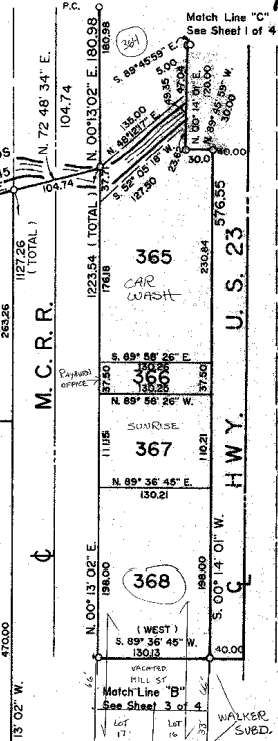
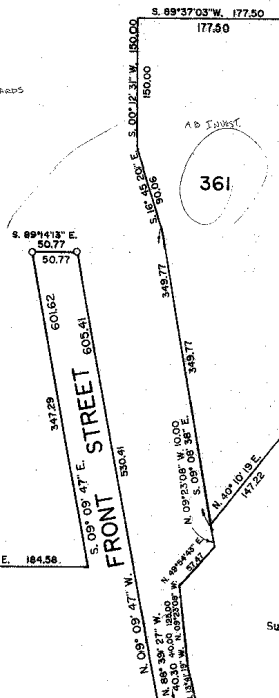


Map of the VILLAGE OF GRANTON  
 Middle Branch  
 INTERMEDIATE

MILL RESERVATION



362 Forward



**PLAT LEGEND**

1. ALL DIMENSIONS ARE IN FEET.
2. CONCRETE MONUMENTS CONSISTING OF A SOLID STEEL ROD, 1/2 INCH IN DIAMETER AND 36 INCHES IN LENGTH AND COMPLETELY ENCASED IN CONCRETE 4 INCHES IN DIAMETER, HAVE BEEN PLACED AT ALL POINTS MARKED THIS 'O'.
3. CORNER MONUMENTS CONSISTING OF 1/2 INCH STEEL RODS, AT LEAST 4 INCHES IN LENGTH, DRILLED, GROUTED AND CAPPED IN CEMENT WALKS ARE MARKED THIS 'X'.
4. LOT CORNERS HAVE BEEN MARKED WITH 1/2 INCH IN DIAMETER STEEL RODS, AT LEAST 18 INCHES IN LENGTH. LOT CORNERS MARKED WITH DRILL HOLES OR 'P.C.' NAILS IN CONCRETE ARE MARKED THIS 'X'.
5. BEARINGS WERE ESTABLISHED FROM PLANS ON FILE OF THE MICHIGAN DEPARTMENT OF TRANSPORTATION FOR HIGHWAY U.S. 23 (FILE NO. 6-R-2 SHEET 19).
6. ALL CURVILINEAR DIMENSIONS ARE ARC LENGTHS.



Survey and Plat by:  
*Richard L. Miller*  
 Richard L. Miller  
 Registered Land Surveyor No. 16050

Assessor's Plat of CITY OF STANDISH NO. 1 CABINET 2, SLIDES