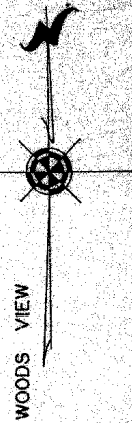
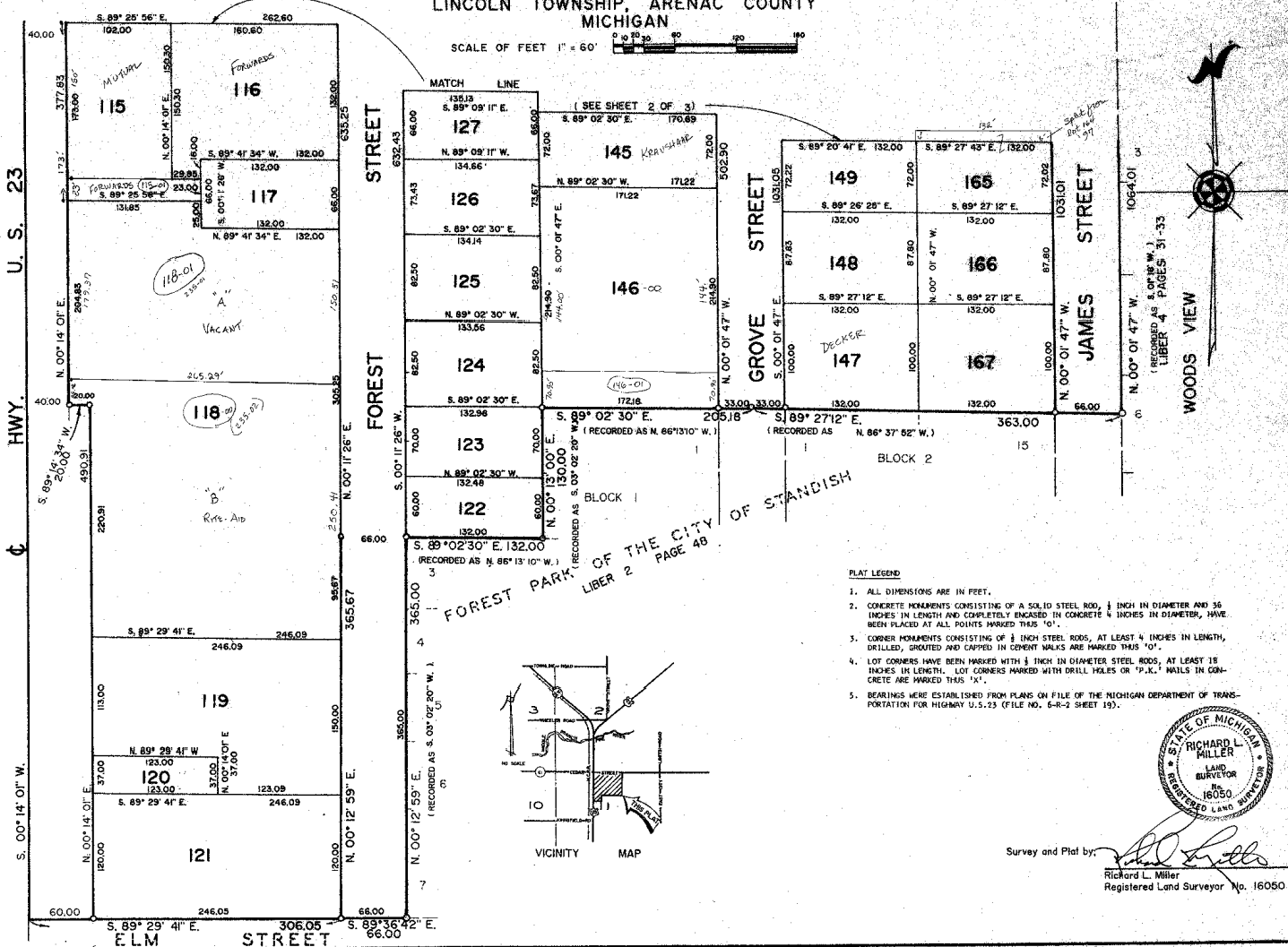


ASSESSOR'S PLAT OF CITY OF STANDISH NO. 2

A SUBDIVISION OF PART OF THE NORTH 1/2 OF SECTION II, T. 18 N. R. 4 E.
LINCOLN TOWNSHIP, ARENAC COUNTY
MICHIGAN

SCALE OF FEET 1" = 60'



MATCH LINE
FOREST STREET

GROVE STREET

JAMES STREET

U. S. 23

HWY.

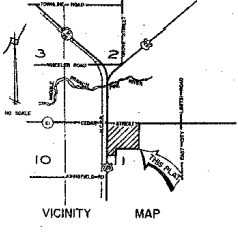
S. 00° 14' 01" W.

ELM STREET

FOREST PARK OF THE CITY OF STANDISH
LIBER 2 PAGE 48

PLAT LEGEND

1. ALL DIMENSIONS ARE IN FEET.
2. CONCRETE MONUMENTS CONSISTING OF A SOLID STEEL ROD, 1/2 INCH IN DIAMETER AND 36 INCHES IN LENGTH AND COMPLETELY ENCASED IN CONCRETE 4 INCHES IN DIAMETER, HAVE BEEN PLACED AT ALL POINTS MARKED THIS '10'.
3. CORNER MONUMENTS CONSISTING OF 1/2 INCH STEEL RODS, AT LEAST 4 INCHES IN LENGTH, DRILLED, GROUTED AND CAPPED IN CEMENT WALKS ARE MARKED THIS '10'.
4. LOT CORNERS HAVE BEEN MARKED WITH 1/2 INCH IN DIAMETER STEEL RODS, AT LEAST 18 INCHES IN LENGTH. LOT CORNERS MARKED WITH DRILL HOLES OR "P.K." NAILS IN CONCRETE ARE MARKED THIS 'X'.
5. BEARINGS WERE ESTABLISHED FROM PLANS ON FILE OF THE MICHIGAN DEPARTMENT OF TRANSPORTATION FOR HIGHWAY U.S. 23 (FILE NO. 6-R-2 SHEET 19).



Survey and Plat by: *Richard L. Miller*
Richard L. Miller
Registered Land Surveyor No. 16050